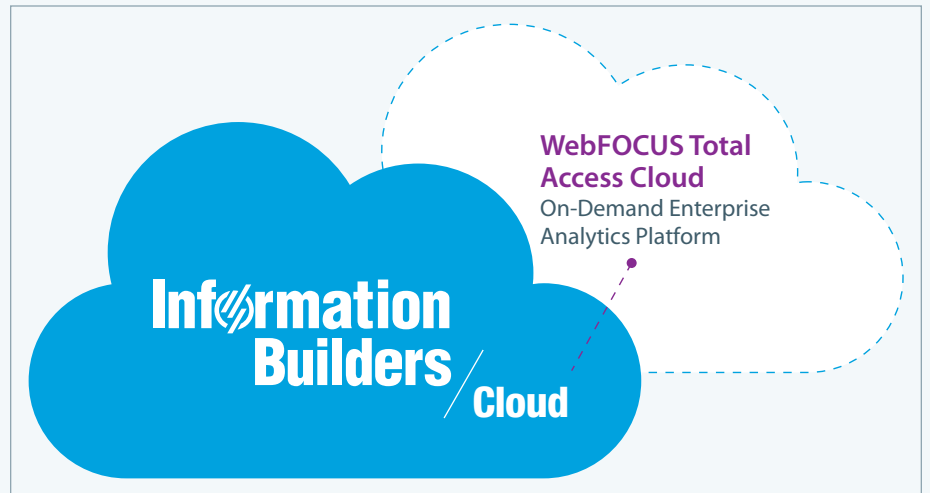


WebFOCUS Total Access Cloud

Fully Managed, End-to-End Business Intelligence, Analytics, and Data Management

Highlights

- Enterprise-grade, fully hosted cloud platform for business intelligence (BI), analytics, and data management
- Amazon Web Services (AWS) hosted, managed services – sourced from a single vendor
- Modern BI and analytics platform supports extensive set of use cases
- Comprehensive governance enables metadata-driven delivery and monitoring of trusted analytics
- Operationalized insights support line-of-business employees



WebFOCUS Total Access Cloud offers rapid provisioning and time to market, complete with end-to-end managed hosting and cloud services.



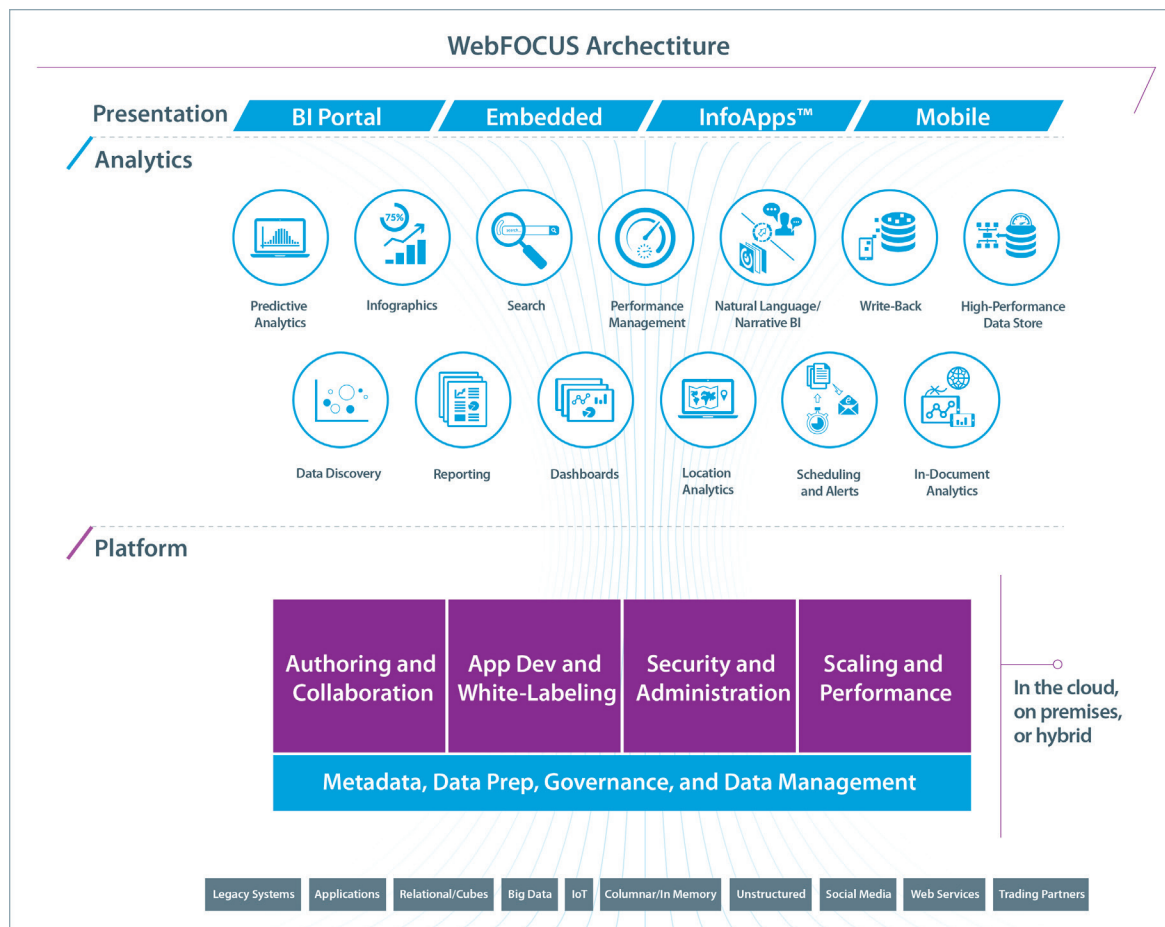
Information Builders provides the industry's most scalable software solutions for data management and analytics. With one smart platform for integration, data quality, and analytics, we help companies manage their data, generate insights, take action, and deliver impact.

Business intelligence (BI) and analytics cloud solutions provide many benefits over traditional infrastructure, such as a lower upfront investment, simpler and faster deployments, and greater flexibility and scalability to handle growth and unanticipated demand.

In the past, choices for cloud-based BI and analytics were limited to simple data exploration and visualization. With Information Builders, you can now leverage a comprehensive BI, analytics, and information management platform via cloud delivery.

The WebFOCUS Total Access Cloud Advantage offers:

- Enterprise-class BI, analytics, and data management in the cloud, powered by Amazon Web Services (AWS)
- End-to-end managed hosting and cloud services
- Single provider feature for account management, provisioning, software, and managed hosting services



Enterprise Analytics Platform as a Service

WebFOCUS Total Access Cloud provides access to all features and capabilities of our WebFOCUS BI and analytics platform.

WebFOCUS Enterprise-Grade Analytics Platform

WebFOCUS delivers unrivalled adoption, scalability, security, and governance, plus a fully upgraded user experience. WebFOCUS running on AWS results in a comprehensive on-demand analytics platform, combined with fully managed hosting services.

Broad and Deep Analytical Capabilities

Millions of users depend on WebFOCUS for analytics and insights, whether pure business users, analysts, operational workers, partners, or customers. Its broad array of capabilities is versatile and proven.

Industry's Most Scalable Platform

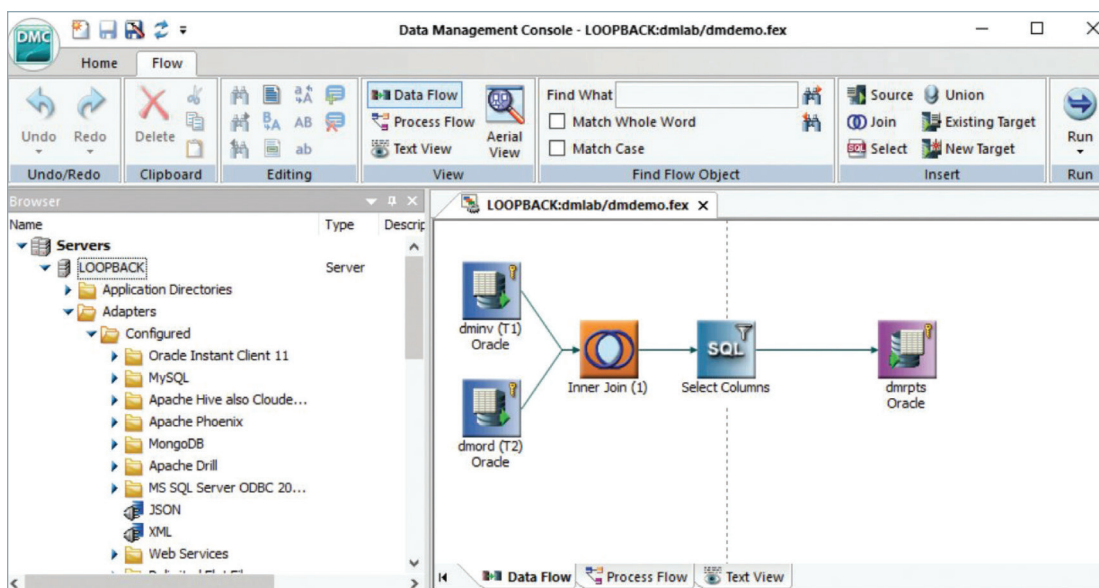
WebFOCUS can deploy secure applications to thousands or even millions of users inside and outside the corporate firewall. Its robust platform architecture and analytical flexibility helps achieve high user-adoption rates.

WebFOCUS Total Access Cloud provides access to all features and capabilities of our WebFOCUS BI and analytics platform.

WebFOCUS Total Access Cloud Includes Data Management

Information Builders has two major market competencies: BI and analytics, and data management. The WebFOCUS Total Access Cloud package includes DataMigrator, one of our most useful data management tools.

DataMigrator enables fast, flexible, end-to-end extract, transform, and load (ETL) process creation involving heterogeneous data structures across disparate computing platforms. DataMigrator is a powerful and unique addition to a cloud analytics solution, where data management and movement are critical to successful implementations.



Information Builders has two major market competencies: BI and analytics, and data management. The WebFOCUS Total Access Cloud package includes DataMigrator, one of our most useful data management tools.

DataMigrator enables organizations to:

- Aggregate, join, merge, and apply selection criteria to information from any combination of systems
- Simplify data movement from operational systems to a data warehouse whether on premise or in the cloud
- Transform data from raw forms into structures that are more suited to your application
- Simplify loading of data into a target database through the automatic parallel processing of bulk loaders or row-at-a-time inserts and updates
- Execute, schedule, review, manage, audit, and create dependencies among ETL requests
- Eliminate the time spent manually coding processes to extract, transform, and load data

Combining data management technology with the cloud offering is unique and provides accelerated methods of organizing data and deploying solutions.

End-to-End Managed Hosting and Cloud Services

A WebFOCUS Total Access Cloud subscription includes end-to-end cloud managed hosting services and cloud support services. These are summarized below.

Provisioning Management

- Easy provisioning of managed services that provide full industry compliance (ISO, SOC 3, PCI, HIPAA, etc.) for network, CPU, storage, and more

Logging, Monitoring, and Event Management

- Logging activity and alerts based on health checks
- Information Builders monitors and investigates alerts whenever triggered
- All logs are stored and aggregated

Continuity Management

- Managed Services provides backups using standard, snapshot functionality on a scheduled interval
- Restore actions from specific snapshots can be performed on demand
- 99.99 percent uptime SLA

Security and Access Management

- Configuring of anti-malware protection, intrusion detection, intrusion prevention systems, and security capabilities – to be approved by the customer, (e.g., identity and access management roles and security groups)

Patch Management

- Managed Services applies and installs updates to instances for supported operating systems and software pre-installed with supported operating systems
- Managed Services will apply critical security updates outside of the selected maintenance window. Managed Services will apply important updates during the selected maintenance window

Incident Management

- 24/7/365 enterprise support
- Information Builders is the single point of contact and escalation
- Managed Services proactively notifies customers of incidents detected

Flexible Provisioning and Deployment Options

- **Pure Cloud:** Data is located in the cloud – WebFOCUS operates in cloud
- **Hybrid Cloud:** Data is located on-premises – WebFOCUS operates in cloud
- **Federated Hybrid Cloud:** WebFOCUS operates both in cloud and on-premises

Multi-Tenant Protection

- Fully managed multi-tenant protection, including multi-tenant BI applications on top of the multi-tenancy of the cloud infrastructure

Access to AWS Sources and Capabilities

- Access to sources and capabilities such as Redshift, Athena, S3, Dynamo DB, Elastic Cache, Aurora, MariaDB, Microsoft SQL Server, Oracle, Postgres, and more

Industry Compliance

This solution provides out-of-the-box industry compliance for ISO, SOC 3, PCI, and other standards, as well as auditing and certifications of data centers, policies, and procedures. Additionally, the cloud offering leverages AWS support for compliance around common laws, regulatory domains, and industry requirements, such as GDPR and HIPAA.

The Power of AWS and Information Builders

Via Information Builders' status as a Consulting Partner in the AWS Partner Network (APN), organizations can leverage a comprehensive and extensive analytics and data management platform in the cloud without engaging multiple vendors. Information Builders provides a single-source AWS solution for software, on-boarding, account management, cloud managed services, and customer support.

Through our Consulting Partner certification, we also provide certifications, support, and access to AWS capabilities. Unlike other cloud solutions, which have complicated pricing structures that can total tens of thousands of dollars annually, our pricing model is simple and straightforward. One annual per-user price includes all fees and maintenance.

Start Your Journey Today

WebFOCUS Total Access Cloud offers rapid provisioning and time to market, complete with end-to-end managed hosting and cloud services. Information Builders provides trusted, deep experience in guiding our customers on their journey to the cloud.

Contact us to start your journey.

Worldwide Offices

Corporate Headquarters

Two Penn Plaza
New York, NY 10121-2898
(212) 736-4433
(800) 969-4636

United States

Atlanta, GA* (770) 395-9913
Boston, MA* (781) 224-7660
Chicago, IL* (630) 971-6700
Cincinnati, OH* (513) 891-2338
Dallas, TX* (972) 398-4100
Denver, CO* (303) 770-4440
Detroit, MI* (248) 641-8820
Federal Systems, D.C.* (703) 276-9006
Florham Park, NJ (973) 593-0022
Houston, TX* (713) 952-4800
Los Angeles, CA* (310) 615-0735
Minneapolis, MN* (651) 602-9100
New York, NY* (212) 736-4433
Philadelphia, PA* (610) 940-0790
Pittsburgh, PA (412) 494-9699
San Jose, CA* (408) 453-7600
Seattle, WA (206) 624-9055
St. Louis, MO* (636) 519-1411, ext. 321
Washington, D.C.* (703) 276-9006

International

Australia*
Melbourne 61-3-9631-7900
Sydney 61-2-8223-0600
Austria Raffaisen Informatik Consulting GmbH
Wien 43-1-211-36-3344
Brazil
São Paulo 55-11-3372-0300
Canada
Calgary (403) 561-3144
Montreal* (514) 421-1555
Toronto* (416) 364-2760
Vancouver (604) 961-0065
China Peacom, Inc.
Fuzhou 86-15-8800-93995
Czech Republic InfoBuild Software CE s.r.o.
Praha 420-234-234-773
Estonia InfoBuild Estonia OÜ
Tallinn 372-618-1585
Finland InfoBuild Oy
Espoo 358-207-580-840
France*
Suresnes +33 (0)1-49-00-66-00
■ Luxembourg
Germany
Eschborn* 49-6196-775-76-0
Greece Applied Science Ltd.
Athens 30-210-699-8225
Guatemala IDS de Centroamerica
Guatemala City (502) 2412-4212
India* InfoBuild India
Chennai 91-44-42177082
Israel Team Software Ltd.
Petah-Tikva 972-54-799-1799
Italy
Agrate Brianza 39-039-59-66-200
Japan KK Ashisuto
Tokyo 81-3-5276-5863
Latvia InfoBuild Lithuania, UAB
Vilnius 370-5-268-3327
Lithuania InfoBuild Lithuania, UAB
Vilnius 370-5-268-3327
Mexico
Mexico City 52-55-5062-0660

Middle East

ICSME
Dubai 971-11-439-15222
■ United Arab Emirates (UAE)

Netherlands*

Amstelveen 31 (0)20-4563333
■ Belgium

Poland

Onwelo S.A.
Warszawa 48-22-160-5365

Portugal

Lisboa 351-217-217-400

South Africa

InfoBuild (Pty) Ltd.
Johannesburg 27-11-064-5668

South Korea

Dfocus Co., Ltd.
Seoul 02-3452-3900

Southeast Asia

Information Builders SEAsia Pte. Ltd.
Singapore 60-172980912
■ Bangladesh ■ Brunei ■ Burma ■ Cambodia
■ Indonesia ■ Malaysia ■ Papua New Guinea
■ Thailand ■ The Philippines ■ Vietnam

Spain

Barcelona 34-93-452-63-85
Bilbao 34-94-400-88-05
Madrid* 34-91-710-22-75

Sweden

Stockholm 46-8-76-46-000
■ Norway

Switzerland

Brugg 41-44-839-49-49

Taiwan

Galaxy Software Services, Inc.
Taipei 886-2-2586-7890, ext. 114

Turkey

Paladin Bilisim Danismanlik A.S.
Istanbul 90-532-111-32-82

United Kingdom*

Uxbridge Middlesex 44-20-7107-4000

Venezuela

InfoServices Consulting
Caracas 58-212-261-5663

West Africa

InfoBuild FSA
Abidjan 225-01-17-61-15

* Training facilities are located at these offices.

Find Out More

We can help you succeed. Talk to your local Information Builders representative to learn how. Visit us at informationbuilders.com, e-mail askinfo@informationbuilders.com, or call **(800) 969-4636** in the U.S. and Canada. To improve your skills, visit education.ibi.com.

Corporate Headquarters

Two Penn Plaza, New York, NY 10121-2898 (212) 736-4433; Fax (212) 967-6406