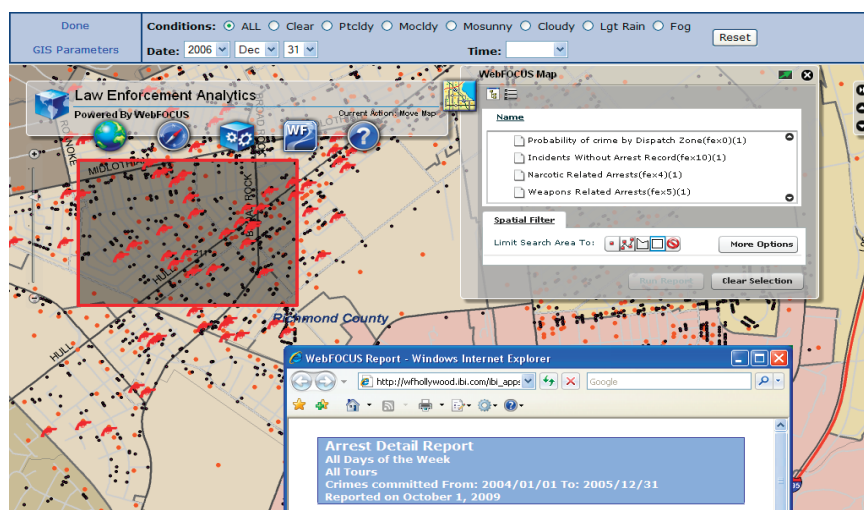


Information Builders enables agile information solutions with business intelligence (BI) and integration technologies. WebFOCUS – the most widely utilized business intelligence platform – connects to any enterprise system or application and enables simple and intuitive interaction with information.

Law Enforcement Analytics from Information Builders integrates geographic information systems (GIS), business intelligence (BI), enterprise search, and predictive modeling of real-time crime data to help users understand when and where crimes may occur.

Predictive Policing

Proactively Fight Crime With WebFOCUS



Most law enforcement agencies are able to leverage historical data for reporting and “rear-view” analysis of past events. More recently, real-time crime centers are bringing officers information about what is happening now. With predictive modeling, law enforcement agencies now have a proactive way to anticipate and prevent criminal activity.

Instead of relying on instinct, police departments can proactively recognize and plan for threats to public safety before they happen. Predictive policing combines data from different sources (including CAD, RMS, and JMS) and makes information available to:

- **Individual officers**, who gain insight into the individuals they encounter, which enhances officer safety and closure rates
- **Incident commanders**, who gain improved situational awareness about resources, risks, and the local environment
- **Command staff**, so they can formulate policies and strategies to better address staffing and crime across the agency
- **Crime analysts**, who can visualize, analyze, search, and sort through data across systems to quickly identify suspects, patterns, trends, and hot spots

That’s why more and more police departments are embracing predictive policing. By dynamically uncovering the critical patterns, trends, relationships, and variables that can be indicators of future crime, public safety and law enforcement agencies have a proactive way to anticipate and reduce criminal activity.

Find Out More

To find out how our solutions can help your company succeed, talk to an Information Builders representative today. Contact your local Information Builders office, visit us at informationbuilders.com, or in the U.S. and Canada, call (800) 969-4636.

Predictive analytics combines powerful automated discovery and analysis technologies to extend and enhance traditional police work, allowing officers to:

Understand Key Crime Contributors

Certain conditions – such as time of day, special events, location, even the weather – can have a significant impact on the potential for crime. With predictive modeling, law enforcement agencies can identify factors that impact crime, and which are most likely to result in an incident. Armed with this intelligence, they can more precisely determine when, where, and why crimes may occur.

Forecast and Prevent Crime

With predictive analytics, law enforcement professionals are empowered with a “forward view” of potential criminal activity. They can estimate when the probability of crime is highest, who is most likely to participate in criminal behavior, and what locations are most at risk.

Improve Resource Allocation

The key to optimizing crime deterrence is to deploy resources when and where they are most needed. Predictive modeling gives law enforcement the insight to effectively allocate resources, boosting protection by making sure officers are in the right place at the right time.

Uncover Vulnerabilities

Police departments can get alerts when new threats arise. For example, they must know when a registered sex offender moves, when an event that may result in crime is scheduled, when a local criminal is released from jail, or if foreclosures spike in a particular area. With predictive modeling, law enforcement agencies can stay on top of these triggers and take appropriate preventive actions.

Stop Repeat Offenders

Predictive modeling allows for rapid and early identification of career or serial criminals. Law enforcement professionals can assess patterns and trends in past behaviors to statistically determine who is most likely to break the law repeatedly. This can minimize losses caused by repeat offenders and help aid in the disruption of organized criminal activity.

State-of-the-Art Intelligence for Law Enforcement Agencies

When today's police departments need robust, innovative, and reliable predictive modeling, they turn to Information Builders' Law Enforcement Analytics (LEA) package. Built on the cutting-edge WebFOCUS RStat solution, a fully-integrated business intelligence and data mining platform that leverages the market-leading R engine, LEA taps into the the power of ad hoc and predictive analytics, and extends it with other advanced capabilities such as dashboards and scorecards, data visualization, interactive mapping, geospatial analysis, and enterprise search.

This combination empowers law enforcement organizations with the tools they need to bridge the gap between years of historical incident data and future forecasts. Mere instinct is replaced with the ability to perform highly sophisticated analysis of years' worth of incident data from virtually any source, including criminal histories, incident reports, crime tips, and 911 calls stored in CAD, RMS, and JMS applications. By uncovering the critical patterns, trends, relationships, and variables that can be indicators of future crime activity, police departments can proactively recognize – and react to – threats and risks to public safety before they take place.