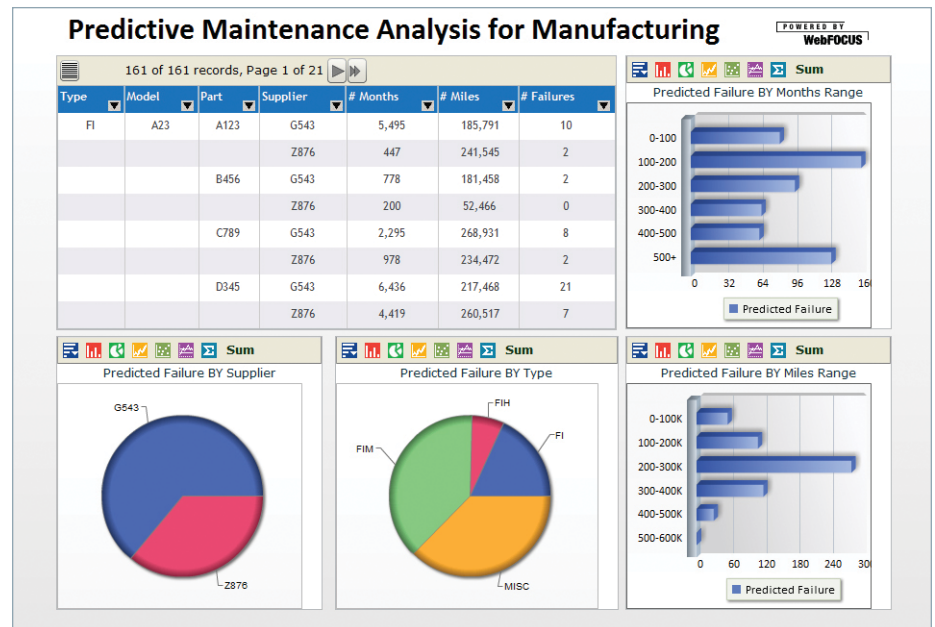


Information Builders' WebFOCUS business intelligence and iWay Software integration technologies provide an end-to-end information management strategy, combining performance management, data governance, business intelligence, and analytics to help organizations make smarter decisions.

WebFOCUS RStat gives manufacturers access to advanced predictive analytics technologies that help them progress from reactive to proactive decision-making.

# Predictive Analytics for Manufacturing



## WebFOCUS RStat Optimizes Production and Process Efficiency

Manufacturers generate and store tremendous amounts of data. The systems that house vital intelligence about engineering, quality control, production, purchasing, inventory management, and more are often disparate and geographically dispersed – making it difficult to leverage information for strategic advantage.

Predictive analytics combines powerful, fully automated discovery and analysis technologies that let manufacturers use enterprise data to improve all facets of their operations, such as ordering parts and components, setting production schedules, managing inventory, maintaining product quality, and satisfying customers. With WebFOCUS RStat from Information Builders, manufacturers have access to advanced predictive analytics technologies that give them the ability to discover patterns and trends within their historical data and progress from reactive to proactive decision-making.

For example, models can be created to better understand the drivers behind product quality issues, scrap and repair decisions, or consumer demand. Models are then deployed to current data as scoring applications to predict the behavior of interest. This consistent and fact-based approach enables all manufacturers to achieve their most important quality, productivity, and profitability objectives.

## Find Out More

To find out how our solutions can help your company succeed, talk to an Information Builders representative today.

Contact your local Information Builders office, visit us at

**informationbuilders.com,**

or in the U.S. and Canada,

call **(800) 969-4636.**

### Optimizing Product Quality

Predictive analytics helps manufacturers enhance quality management initiatives. For example, by more accurately detecting patterns and trends in product problems – and more rapidly uncovering their root causes – manufacturers can better predict and reduce the number of defects before they impact customer satisfaction, safety, and loyalty.

### Enhancing Warranty Planning

With predictive analytics in place, manufacturers can determine if, when, and why a part or product is most likely to fail. This helps ensure profitability in warranty practices by fostering smarter decisions when defining service and repair policies. Predictive analytics also minimizes the risk of financial loss by making it easier to identify fraudulent or suspicious warranty claims.

### Improving Demand Planning and Inventory Management

Predictive analytics gives manufacturers greater insight into sales trends and buyer demand. Production output can be adjusted to avoid stock shortages or overages, and smarter decisions can be made regarding purchasing components and raw materials, so more economical business models, such as just-in-time or lean manufacturing strategies, can be adopted.

### Increasing Maintenance Efficiency

Manufacturers rely on their machinery to keep production schedules on track. Predictive analytics can help them better understand when and why equipment fails. This enables them to take a more proactive approach to maintenance, so they ensure peak performance, prevent downtime and production delays, and avoid costly and unnecessary maintenance.

### WebFOCUS RStat: State-of-the-Art Predictive Analytics for Manufacturers

The ability of RStat to integrate with our BI platform allows for easy data access and preparation, as well as deployment of predictive results to meet a wide variety of end-user requirements. Leveraging the 'R' open source language, and providing a single environment for both BI and predictive analytics, RStat lowers the total cost of ownership by eliminating the need for additional hardware and maintenance. Containing the most commonly used techniques for advanced analytics, RStat's graphical user interface (GUI) lets our customers build predictive models without having to learn code or syntax, and simplifies the model creation and testing process.

RStat empowers manufacturers to accurately anticipate – and respond to – changes among their customer base, within their business, and throughout their industry. The ability to make business decisions based on experience and intuition is enhanced with robust scoring applications that enable precise, validated predictions. Consistent, complete, and accurate results can be used to make better decisions about tomorrow, resulting in higher profits, reduced costs, and maximized ROI.