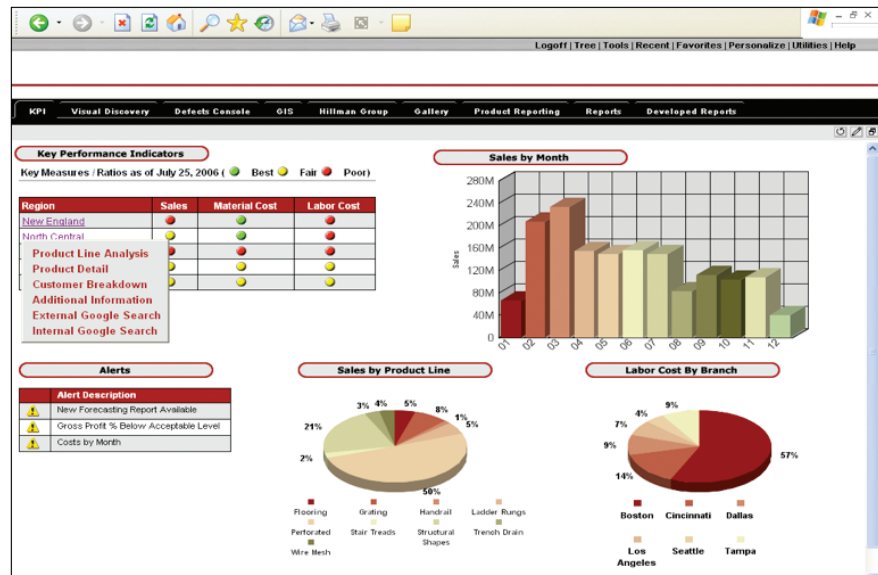


Information Builders enables agile information solutions with business intelligence (BI) and integration technologies. Flexible, scalable, and secure, WebFOCUS – the most widely utilized BI platform – permeates every level of the extended enterprise through a simple and intuitive user experience.

Enhance your ability to report and analyze company performance, inventory levels, demand forecasting, purchasing, production planning, and other business related information in real time.

WebFOCUS for System i



Boost Reporting Value With System i Reliability

Information Builders' WebFOCUS is a comprehensive and fully integrated enterprise reporting platform. WebFOCUS permeates every level of an organization – executive, analytical, and operational – and makes any data available, accessible, and meaningful to every one who needs it, when and how they need it.

The IBM System i™ system enables business to do more with less. It is specifically designed to help create a more optimized computing environment and ensure that your business continues operating reliably. The highly secure, integrated IBM eServer System i runs thousands of the world's most popular business applications, including Information Builders' WebFOCUS reporting and business intelligence software. Together, Information Builders and IBM provide faster, more reliable and highly secure ways to make it easy to deliver information in the format people need to make decisions.

Why System i and Information Builders?

By simplifying your IT environment, the System i helps you deliver productivity improvements as well as potential cost reductions. The System i server – like its predecessors, the iSeries and AS/400® server – has established a reputation as a reliable, flexible server with outstanding price/performance for mission-critical applications.

Since the introduction of the System i server, IBM has built upon that technology foundation and expanded it to include support for multiple operating systems, including i5/OS™ (the next generation of OS/400™), AIX 5L™, Linux, and Microsoft® Windows® via Integrated xSeries® Servers (IXSs), Integrated xSeries Adapters (IXAs), and dynamic logical partitioning (LPAR).

To deliver new value to your business, you need to integrate people, processes, and information. WebFOCUS' integrated design helps make this process simple. Together with the System i, you can combine the operating systems, middleware, database, security, and storage into one system that can be deployed quickly and easily managed. All the parts of the products are designed, built, and tested together, end to end – eliminating the seams between most layers of technology and applications.

Leverage IT Architecture to Simplify Report Development

Business intelligence solutions based on the System i enable IT teams to centralize key databases and applications, eliminating the need to purchase redundant application functionality across business units. With WebFOCUS, IT organizations can:

- Dynamically share and manage a common set of resources across multiple applications according to business priorities
- Support heterogeneous-workload environments with a homogeneous platform, reducing the need for multiple sets of expertise, support contracts, and management tools
- Consolidate infrastructure servers on available LPARs to provision hundreds of virtual servers

The rich features of WebFOCUS can scale to deliver robust functionality such as:

- Reporting, query, and analysis to meet the information needs of all levels of users in the enterprise with everything from standard reports to ad hoc queries and in-depth OLAP analysis
- Cutting-edge data visualization, such as GIS mapping and advanced graphical components, allowing users at all levels to easily perform intuitive, highly interactive graphical analysis – so they can discover crucial relationships and spot critical trends in an instant
- Information delivery and management to easily schedule, distribute, share, and archive corporate information, providing instant accessibility when it's needed most; Information Builders also eases corporate compliance through automated, repeatable, documented reporting processes
- Data access, integration, and extract, transform, and load (ETL) functionality to allow companies to access virtually any type of information source or build data marts and data warehouses that fully leverage their information assets – which in turn enables management to easily monitor, manage, and expose business metrics to improve competitiveness

By teaming with IBM and its powerful System i servers and leveraging the flexibility and scalability of Information Builders' WebFOCUS, organizations can deliver vital business information and reporting features to employees, customers, and partners across an enterprise at low cost.

Find Out More

To find out how our solutions can help your company succeed, talk to an Information Builders representative today. Contact your local Information Builders office, visit us at informationbuilders.com/solutions/ibm.html or in the U.S. and Canada, call **(800) 969-4636**.

Customer Successes

Elie Tahari, Ltd., a leading designer of women's fashions, created an enterprise business intelligence system that pushes pertinent business information and reports to executives about orders, inventory, sales, and finance. As a result of implementing WebFOCUS for System i, Elie Tahari saw a 15 percent reduction in a key shipping-delivery process, vastly improved visibility into production and sales activity, enhanced data security, and simplified information retrieval operations. Elie Tahari also uses WebFOCUS to analyze point-of-sale data from major department store chains. Similarly, every sales executive receives weekly reports highlighting orders that need immediate attention. Elie Tahari has reduced the inventory in its warehouse and responds more quickly to the needs of its retail customers.

Pierre Foods, a leading cooked-food service provider, built a reporting environment to improve performance and quickly resolve issues. They push reports to users as e-mails and supply departmental metrics in a self-service dashboard environment via an intranet. More than 50 executives, managers, and sales representatives view daily sales, top-line sales revenue, and sales profit by division reports. Prior to implementing the WebFOCUS application, this information was viewed and analyzed monthly; now it is updated every 24 hours and delivered by e-mail every morning. Pierre Foods is extracting more value from existing data and applications because WebFOCUS leverages data and reports from three existing disparate systems. Historically, payroll, labor standards, and time and attendance information was only available in three separate information systems. Using WebFOCUS on the System i, Pierre Foods distributes insightful, timely information in formats such as PDF, e-mail, or HTML.

Sales and Consulting Offices

North America

United States

- **Atlanta,*** GA (770) 395-9913
- **Baltimore,** MD Consulting: (703) 247-5565
- **Boston,*** MA (781) 224-7660
- **Channels,** (800) 969-4636
- **Charlotte,*** NC Consulting: (704) 494-2680
- **Chicago,*** IL (630) 971-6700
- **Cincinnati,*** OH (513) 891-2338
- **Cleveland,*** OH (216) 520-1333
- **Dallas,*** TX (972) 490-1300
- **Denver,*** CO (303) 770-4440
- **Detroit,*** MI (248) 641-8820
- **Federal Systems,*** DC (703) 276-9006
- **Hartford,** CT (860) 249-7229
- **Houston,*** TX (713) 952-4800
- **Los Angeles,*** CA (310) 615-0735
- **Metro Branch (NY/NJ),***
NY Sales: (212) 736-7928
NJ Sales: (973) 593-0022
Consulting: (212) 736-4433, ext. 4443
- **Minneapolis,*** MN (651) 602-9100
- **New Jersey*** (973) 593-0022
- **Orlando,*** FL (407) 804-8000
- **Philadelphia,*** PA (610) 940-0790
- **Phoenix,** AZ (480) 346-1095
- **Pittsburgh,** PA (412) 494-9699
- **St. Louis,*** MO (636) 519-1411
- **San Jose,*** CA (408) 453-7600
- **Seattle,*** WA (206) 624-9055
- **Washington,*** DC Sales: (703) 276-9006
Consulting: (703) 247-5565

Canada

Information Builders (Canada) Inc.

- **Calgary** (403) 538-5415
- **Ottawa** (613) 233-0865
- **Montreal*** (514) 421-1555
- **Toronto*** (416) 364-2760
- **Vancouver*** (604) 688-2499

Mexico

Information Builders Mexico

- **Mexico City** 52-55-5062-0660

Australia

Information Builders Pty. Ltd.

- **Melbourne** 61-3-9631-7900
- **Sydney** 61-2-8223-0600

Europe

- **Belgium** Information Builders Belgium
Brussels 32-2-7430240
- **France** Information Builders France S.A.
Paris 33-14-507-6600
- **Germany** Information Builders (Deutschland)
Dusseldorf 49-211-523-91-0
Eschborn 49-6196-77576-0
Munich 49-89-35489-0
Stuttgart 49-711-7287288-0
- **Netherlands** Information Builders
(Netherlands) B.V.
Amsterdam 31-20-4563324
- **Portugal** Information Builders Portugal
Lisbon 351-217-217-491
- **Spain** Information Builders Iberica S.A.
Barcelona 34-93-344-32-70
Bilbao 34-94-425-72-24
Madrid 34-91-710-22-75
- **Switzerland** Information Builders Switzerland AG
Dietlikon 41-44-839-49-49
- **United Kingdom** Information Builders (UK) Ltd.
London 44-845-658-8484

Representatives

- **Austria** Raiffeisen Informatik Consulting GmbH
Vienna 43-12-1136-3870
- **Brazil** InfoBuild Brazil Ltda.
São Paulo 55-11-3285-1050
- **China**
InfoBuild China, Inc.
Shanghai 86-21-5080-5432
Rongji Software Technology Co., Ltd.
Beijing 86-10-5873-2031
- **Ethiopia** MKTY IT Services Plc
Addis Ababa 251-11-5501933
- **Finland** InfoBuild Oy
Espoo 358-207-580-843
- **Greece** Applied Science
Athens 30-210-699-8225
- **Guatemala** IDS de Centroamerica
Guatemala City 502-2361-0506
- **Gulf States** Nesma Advanced Technologies
■ Bahrain ■ Kuwait ■ Oman
■ Qatar ■ Yemen ■ United Arab Emirates
Riyadh 96-1-465-6767
- **India** InfoBuild India
Chennai 91-44-42177082

- **Israel** NESS A.T. Ltd.
Tel Aviv 972-3-5483638
- **Italy** Selestia G C Applications S.P.A.
Genova 39-010-64201-224
Milan 39-02-2515181
Torino 39-011-5513-211
- **Japan** K.K. Ashisuto
Osaka 81-6-6373-7113
Tokyo 81-3-5276-5863
- **Malaysia** Elite Software Technology Sdn Bhd
Kuala Lumpur 60-3-21165682
- **Norway** InfoBuild Norway
Oslo 47-23-10-02-80
- **Philippines** Beacon Frontline Solutions, Inc.
63-2-750-1972
- **Russian Federation** FOBOS Plus Co., Ltd.
Moscow 7-495-124-0810
- **Saudi Arabia** Nesma Advanced Technology Co.
Riyadh 996-1-4656767
- **Singapore**
Automatic Identification Technology Ltd.
65-6286-2922
- **South Africa** Fujitsu Services (Pty.) Ltd.
Johannesburg 27-11-2335911
- **South Korea** Unitech Infocom Co. Ltd.
Seoul 82-2-2026-3100
- **Sweden**
InfoBuild AB
Kista 46-735-24-34-97
Cybernetics Business Solutions AB
Solna 46-7539900
- **Taiwan** Galaxy Software Services
Taipei 886-2-2586-7890
- **Thailand** Datapro Computer Systems Co. Ltd.
Bangkok 662-679-1927, ext. 200
- **Venezuela** InfoServices Consulting
Caracas 58-212-763-1653

Toll-Free Number

- **Sales, ISV, VAR, and SI Partner Information**
(800) 969-4636

*Training facilities are located at these branches;
additional locations are available.

**Authorized to sell iWay Software only.



Corporate Headquarters

Two Penn Plaza, New York, NY 10121-2898 (212) 736-4433 Fax (212) 967-6406
www.informationbuilders.com askinfo@informationbuilders.com

Canadian Headquarters For International Inquiries

150 York St., Suite 1000, Toronto, ON M5H 3S5 (416) 364-2760 Fax (416) 364-6552
+1(212) 736-4433

Copyright © 2007 by Information Builders, Inc. All rights reserved. [65] All products and product names mentioned in this publication are trademarks or registered trademarks of their respective companies.



Printed in the U.S.A.
on recycled paper