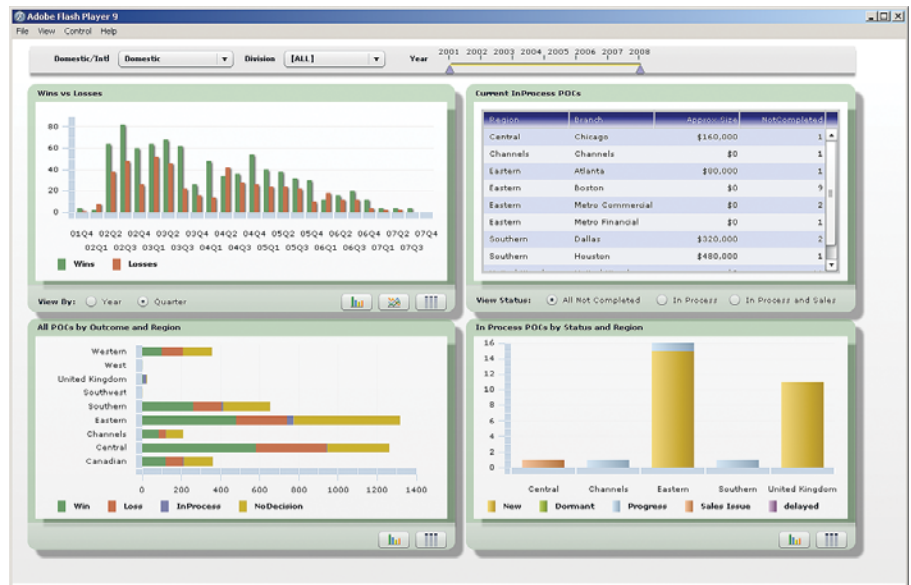


Information Builders enables agile information solutions with business intelligence (BI) and integration technologies. Flexible, scalable, and secure, WebFOCUS – the most widely utilized BI platform – permeates every level of the extended enterprise through a simple and intuitive user experience.

WebFOCUS Enable for Adobe® Flex®: Rapid RIA Development Without Coding

Visualize, Analyze, Act!



Custom Interactive Applications

WebFOCUS Enable for Adobe Flex combines the analytic power of WebFOCUS with RIA technology to deliver custom visualizations and interactive applications. The fusion of RIA with business intelligence (BI) data and analytic capabilities creates a new generation of dashboards called "Flashboards." Animation and transition effects continuously focus the user's attention to the most important information, while the custom interaction guides the user through the iterative analytic process. Flashboards make multi-dimensional iterative applications simple and intuitive. Now any BI user can easily gain insight into any of the dimensions of the business, previously accessible only to experts in statistical and OLAP software.

WebFOCUS Enable offers a new approach to application development by mashing up the strengths of two IDE products: WebFOCUS and Adobe Flex Builder™. Adobe Flex is the leading IDE for developing interactive applications. It combines visualization, animation, and interaction effects to produce an engaging and visually expressive user experience.

Find Out More

To find out how our solutions can help your company succeed, talk to an Information Builders representative today. Contact your local Information Builders office, visit us at informationbuilders.com, or in the U.S. and Canada, call (800) 969-4636.

WebFOCUS Enable is an application engine for Flex Builder 2.0. It manages the data, performs the most useful BI functions, and coordinates the user interactions out of the box. It allows developers to focus on creating the front-end, the visualization, and the user experience in the iterative analytic application. WebFOCUS and Flex developers can rapidly create custom BI applications without the need to know and code ActionScript or MXML.

Features

WebFOCUS Enable provides:

- **Data Integration**
 - Leverage all WebFOCUS data access reporting functions. One or more procedures can be used in a WebFOCUS Enable application to develop robust multi-level and multi-page applications
- **Managed Reporting Integration**
 - Direct access from within Flex applications to Managed Reporting secured domains and content
- **BI Aggregation**
 - Implement common BI aggregation functions, so that data is retrieved once, but can be reused many times in the Flex application. Handling the aggregation in the WebFOCUS Enable application provides more efficient processing and fewer trips to the back-end system
- **Custom Filtering Design**
 - Design custom combinations of filters (OLAP-like panels) to allow users to manipulate the data. It provides independent filters, nesting of filters, and linking of filters
- **Custom Interaction Design**
 - Design complex interaction between components, such as using one component to filter another component, or using one component to populate another component with its data
- **Run-Time Interactive Tools**
 - Create run-time calculations and generate charts and roll-up tables. End users can create custom charts, tables, calculations, and filters as they interact with, and analyze, the data
- **API for Custom Coding**
 - Advanced developers can use the API to create the most demanding custom Flex applications, build custom functions, or embed BI into other applications
- **Backward and Forward Compatibility**
 - Compatible with any existing and future version of WebFOCUS