

iWay Software enables online, real-time, and batch integration of information assets, internal business processes, and external business partners all from a single platform.

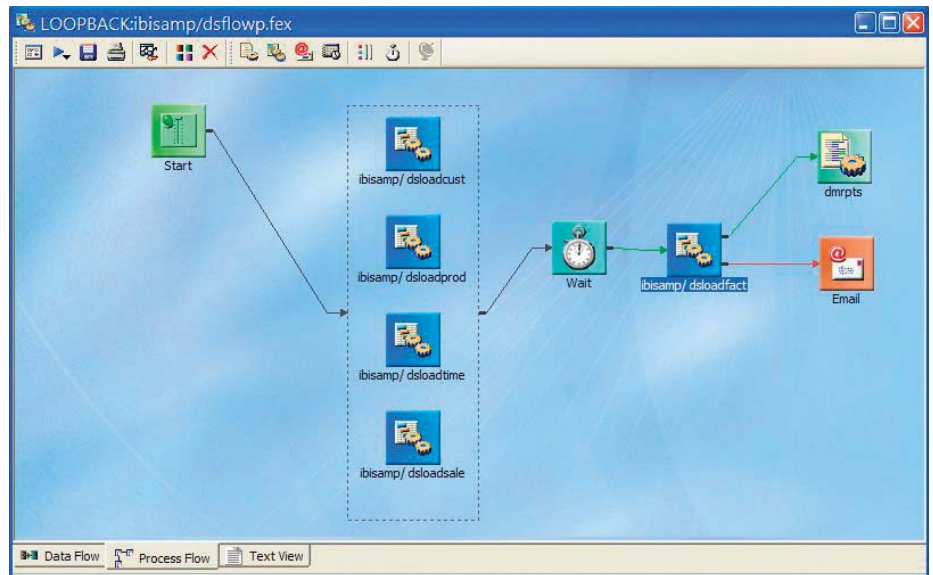
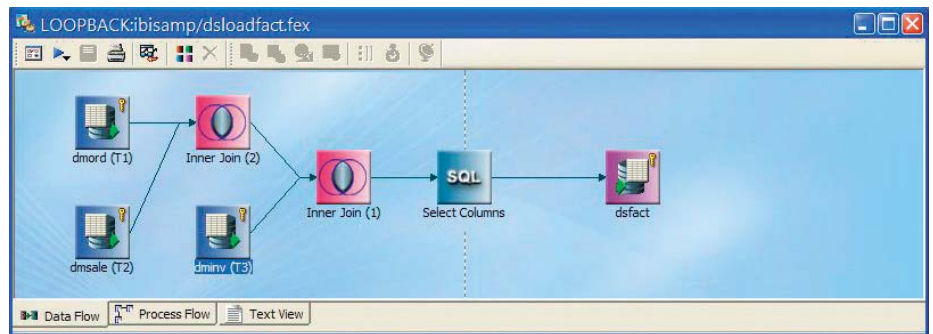
DataMigrator

Fast, Flexible, End-to-End ETL Processes to Move Data Into Data Warehouses

Data Adapters

This is a partial list of the native data adapters. If you don't see what you need, please contact us – we are constantly adding new adapters.

- Adabas
- Adabas/C
- ALLBASE/SQL
- G-ISAM (Informix)
- G-ISAM (Microfocus)
- G-ISAM ACCUCORP
- CA-Datcom
- CA-IDMS/DB
- CA-IDMS/SQL
- Cloudscape
- D-ISAM
- DB2
- DB2/400
- DBASE
- DBMS
- EJB



Unparalleled Data Access and Migration

In many organizations, large amounts of data often remain inaccessible or meaningless for users. With true seamless integration any data is available regardless of its location, storage medium, or format.

DataMigrator is a powerful and comprehensive automated tool designed to dramatically simplify data integration, including the creation, maintenance, and expansion of data warehouses, data marts, and operational data stores. With its intuitive, easy-to-use interface,

Data Adapters (continued)

- ENSCRIBE
- Essbase
- Excel
- Flat Files
- FOCUS Data Access
- IDS-II
- ImageSQL
- IMS
- Informix
- Ingres
- Interplex
- ISAM
- KSAM
- Lotus Notes
- Microsoft Access
- Microsoft OLAP Services
- Microsoft SQL Server
- Millennium
- Model 204
- MUMPS (Digital Standard MUMPS)
- MySQL
- Netezza

DataMigrator enables fast, flexible, end-to-end ETL process creation involving heterogeneous data structures across disparate computing platforms. It allows users to:

- Aggregate, join, merge, and apply selection criteria to information from any combination of systems
- Simplify data movement from operational systems to a data warehouse
- Transform data from raw forms into structures that are more suited to your application
- Simplify loading of data into a target database through the automatic invocation of bulk loaders or row-at-a-time inserts and updates
- Execute, schedule, review, manage, audit, and create dependencies among ETL requests
- Eliminate the time spent manually coding processes to extract, transform, and load data

DataMigrator meets the widest range of information needs by enabling direct access to data in operational systems and staged data in warehouses or marts. This data movement becomes critical to an enterprise when high volumes of data are involved or data resides in multiple systems and needs to be correlated.

Exceptional Ease of Use

A comprehensive workbench with a point-and-click interface dramatically simplifies and accelerates the creation and execution of ETL jobs. DataMigrator provides greater reach and range than any other ETL offering on the market today by employing iWay Software's award-winning data adapters.

DataMigrator can also utilize ODBC, JDBC, XML, and IBM WebSphere MQ connectivity for additional database access. And because the DataMigrator integration engine provides complete data structure transparency, all sources accessed by the servers on your network appear as a set of relational tables – so cross-platform, multiple-database extractions and joins are just a mouse-click away. DataMigrator can create tables in any major relational database, create fixed or delimited flat files, and XML documents as described by an XML-schema definition.

Other features of DataMigrator include:

Data Profiler – Understanding the information available in an existing data source to collect statistics and information about it is a key to building ETL jobs and the data profiling capability built into DataMigrator helps to do that. Data Profiler reports for individual columns or entire tables show number of rows, unique rows, patterns, and nulls. Drill-down reports show the unique values and patterns for alphanumeric columns and outliers for numeric columns.

Synonym Editor – All Information Builders and iWay Software products share metadata and the Synonym Editor is where you can create metadata for data sources, add transformations to be shared by other users, and create views of joined tables

Support for star schema and slowly changing dimensions – The Synonym Editor supports surrogate and foreign key definitions. A process flow can load dimension tables in parallel followed by the fact table load. Automatic processing for slowly changing dimension (SCD) attributes includes surrogate key generation, update and insert for Type I and Type II columns, as well as begin/end date or activation flags.

Data Adapters (continued)

- NonStop SQL
- Nucleus
- Omnidex
- OpenIngres
- Oracle 10g/11g
- PROGRESS
- QSAM
- Rdb
- RMS
- SQL/DS
- SUPRA
- Sybase
- Sybase/IQ
- System 2000
- Teradata
- TOTAL
- TurboIMAGE
- Unisys DMS 1100/2200
- Unisys DMS II
- UniVerse
- VSAM
- XBRL
- XML

Data Flow Designer – The intuitive flow-control interface allows for visual creation of joins, rapid table and column searches, and dynamic error notification. Additionally, real-time request testing can be easily and quickly conducted with just a click of the mouse. Users can also add external routines – created with the DataMigrator transformation editor, a 3GL including legacy COBOL or C-based programs – to the ETL function list. Multiple tables can be loaded in a single pass of an extract.

Process Flow Designer – The ability to graphically develop elaborate process flows makes it easy to design complex jobs, such as building large data warehouses with intricate load requirements. The execution of ETL requests can be fully controlled – and can be based on a schedule defined by the administrator, or can be dependent on the success or failure of previously executed requests. Jobs composed in the Data Flow Designer, or with your own custom programs or scripts, can be launched at any point – or multiple points – in the process flow.

Web Console – Remote review and administration provides efficient management of ETL jobs in a secure environment. Administrators and users can easily review job statistics and drill down into job logs, review the job queue, start and stop servers and server processes, schedule jobs and configure e-mail nodes, manage adapters and metadata, administrate application directories, and create and edit scripts and user exits.

Data source transparency – Make all sources accessed by the servers on your network appear as a set of relational tables easing cross-platform, multiple-database extractions and joins, even for legacy data, cube data, and other non-relational data.

Source code control management – Configure a third-party source management system and create projects as well as associations between DataMigrator application directories and the source control projects you create.

Scheduling – Schedule flows to run hourly, daily, or at any other interval on specific days of the week or month directly from the desktop. Alternately, initiate flows from an external scheduler, application program, mainframe JCL, or platform-specific batch utility.

Change Data Capture – DataMigrator can be integrated with powerful change data capture (CDC) capabilities for selected relational databases. CDC transfers only changed records (inserted, updated, or deleted), increasing labor efficiency by requiring only a single data flow to be composed to handle both initial load and delta processing, dramatically reducing processing time and CPU cycles, and improving the timeliness of information in the data warehouse. Changed records can be pulled as frequently as every minute, so you can enable near-real-time or active data warehouses.

Real-Time Vs. Batch Update of Data

While a schedule of updates for a data warehouse can be as frequent as every minute, there is a more economical method that involves real-time listening for events. In this mode when a message (new record) arrives it is immediately transformed, joined, and error-checked in real time, and then sent to DataMigrator. It is then entered into the target database just as a batch record would have been. There is an additional set of iWay adapters that perform in real time.

Find Out More

To see how we can help you succeed, visit us at iwaysoftware.com, e-mail us at info@iWaySoftware.com, or in the U.S. and Canada, call toll-free **(866) 297-4929**.

Application Adapters

This is a partial list. If you don't see what you need, please contact us.

- JD Edwards
- Lawson
- Oracle Applications
- PeopleSoft
- SAP BW
- SAP ECC
- SAP R/3

DataMigrator Runs on Every Platform

Because DataMigrator runs on all Unix, Linux, Windows, z/OS, z/LINUX, Series i computers it means that data sources that are controlled by an application, like SAP, JD Edwards, PeopleSoft, etc. can have a local adapter acting at either the data source when JDBC is not available, or at the data target when bulk load is needed. It also provides the ability to perform calculations and data cleansing at both the source and target.

On z/OS, DataMigrator has a special cost-saving feature, because it can use the zIIP chip as well as the General Processor chip.

Enterprise-Wide Data Management

DataMigrator is part of iWay Software's comprehensive solutions for building, managing, and optimizing a data architecture that supports multiple latency and access requirements of various IT initiatives – including BI, real-time reporting and analysis, and business activity monitoring.

For more information about our data integration and management solutions, visit iwaysoftware.com/products/dataintegrationsolutions.html.



Corporate Headquarters Two Penn Plaza, New York, NY 10121-2898 (866) 297-4929
iwaysoftware.com info@iwaysoftware.com

For International Inquiries +1(212) 330-1700

Copyright © 2009 by iWay Software. All rights reserved. Patent pending. [85] All products and product names mentioned in this publication are trademarks or registered trademarks of their respective companies.

DN3601344.0909



Printed in the U.S.A.
on recycled paper